

# Trimble WorksOS

## Software

### Real-time visibility of site progress

Trimble® WorksOS Software is cloud-based and intuitive, delivering 3D productivity and real-time progress to plan for site supervisors and project managers to maximize jobsite efficiency.

WorksOS enables multi-user collaboration and communication, giving stakeholders immediate access to the latest information, workflows and project status to empower decision making.

The software performs real-time calculations efficiently and consistently to make it easier to understand real work progress and proactively make adjustments to stay on budget and on schedule.

### Key benefits

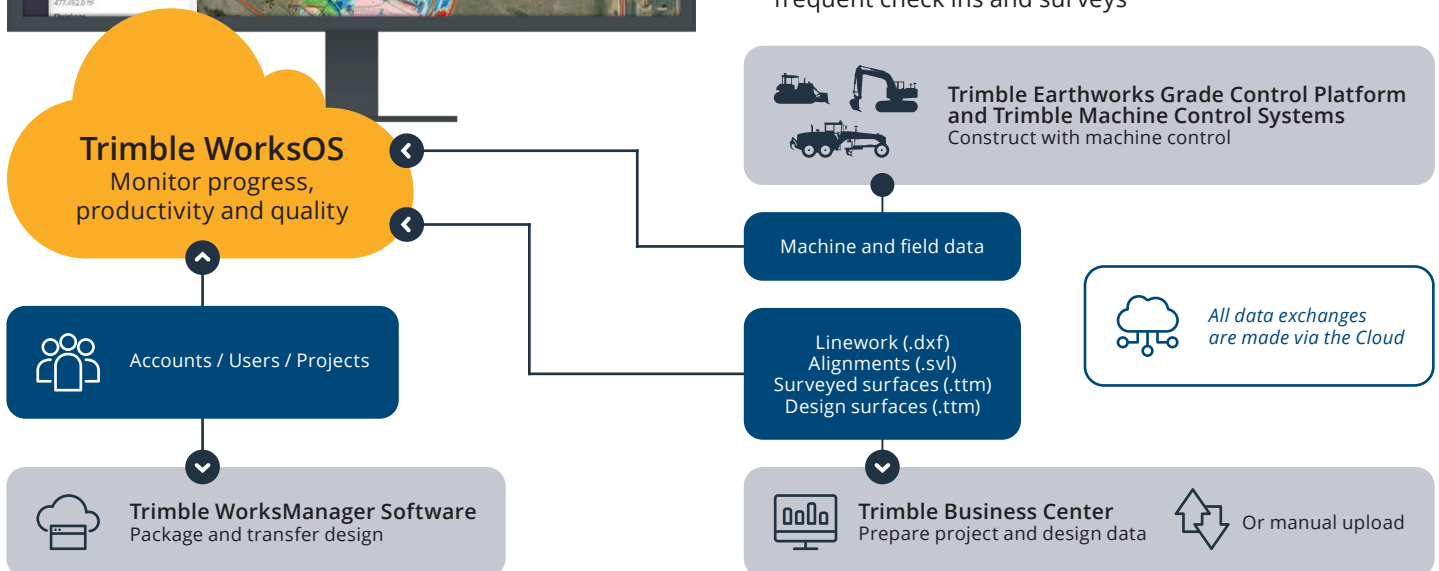
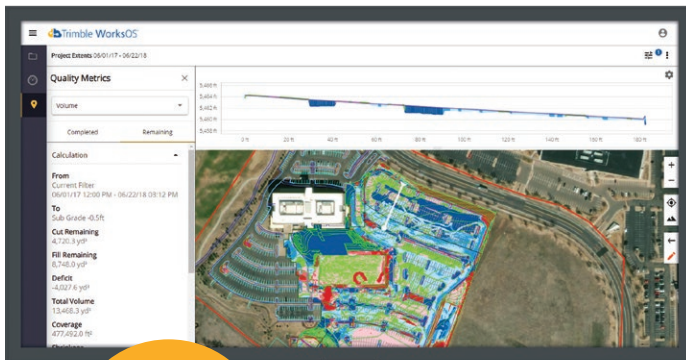
Get more out of your machine control investment and make data driven decisions. WorksOS uses data gathered by Trimble machine control systems to take the guesswork out of bidding, planning, estimating and scheduling so you can save time, maximize resources and increase profits.

### Increased jobsite visibility

- Get real-time cut, fill, volume and compaction data for increased visibility of machine and jobsite productivity
- View progressive volumes of material moved over time to understand and analyze productivity trends
- Drive your machine activity from a central site design for real-time progress versus plan updates from the field to reduce rework, labor and maintenance costs

### Data-driven decision making

- View the progress to plan for each project in a single productivity dashboard to efficiently manage resources across jobsites
- Effortlessly track the progress of multiple working zones and activities for validation of work performed
- Remote access saves time on unnecessary jobsite visits, frequent check ins and surveys



# Trimble WorksOS

Software



## Key features

### Connected construction

Integrate design data from the office with as-built data to provide real-time progress and productivity updates.

- Upload designs, topographical and drone surveyed surfaces, and machine as-built data
- Integrated designs from Trimble Business Center
- Interoperability with Trimble Connect® and Trimble WorksManager software for project, design and asset management
- Utilize machine productivity data from Trimble Earthworks grade control platform and other Trimble machine control systems

### 3D productivity monitoring

WorksOS automates field data collection for accurate, real-time 3D information of work completed, providing complete transparency across the entire project. It is ideal for applications that require live monitoring of compaction and volume metrics.

- Real-time cut, fill, volume and compaction data
- Adjust daily work targets to stay on schedule
- Visibility into which machine is working
- 2D cut/fill maps for material movement
- Pass count maps for compaction
- Filtering capabilities based on machines, geofences and lifts
- Progressive volume charts to show cumulative total over time

### Activity workflow advantage

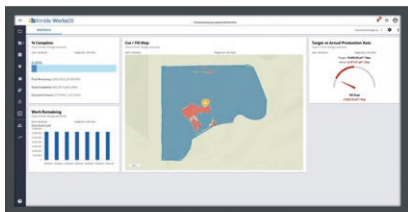
Activity functionality within WorksOS uses survey surfaces and design data to calculate quantities and track progress, eliminating inefficient processes and calculations.

- You don't need to be an expert to create or configure activities in WorkOS
- Define the start/end, quantity and design targets of an activity
- Track progress and productivity to optimize bidding, scheduling and estimating
- Intuitive interface enables users to easily monitor jobsite metrics without having to understand and setup complex filter settings
- Key metrics and completion status of activities in a summary report dashboard for convenient monitoring and reporting
- Identify when progress is behind schedule to make resource corrections and get back on track

### Calculate landfill density

Improve landfill management by calculating daily density to provide valuable insights into operations.

- Volume data is collected from machine mapping
- Generate reports to bring field data into the office
- Gain visibility into density trends to improve decision making, ensure effective resource utilization and extend the life of the landfill



#### Trimble Civil Construction

10368 Westmoor Drive  
Westminster, CO 80021  
USA